



AD21

Pneumatic Hog Ring Tool



OPERATING & MAINTENANCE MANUAL



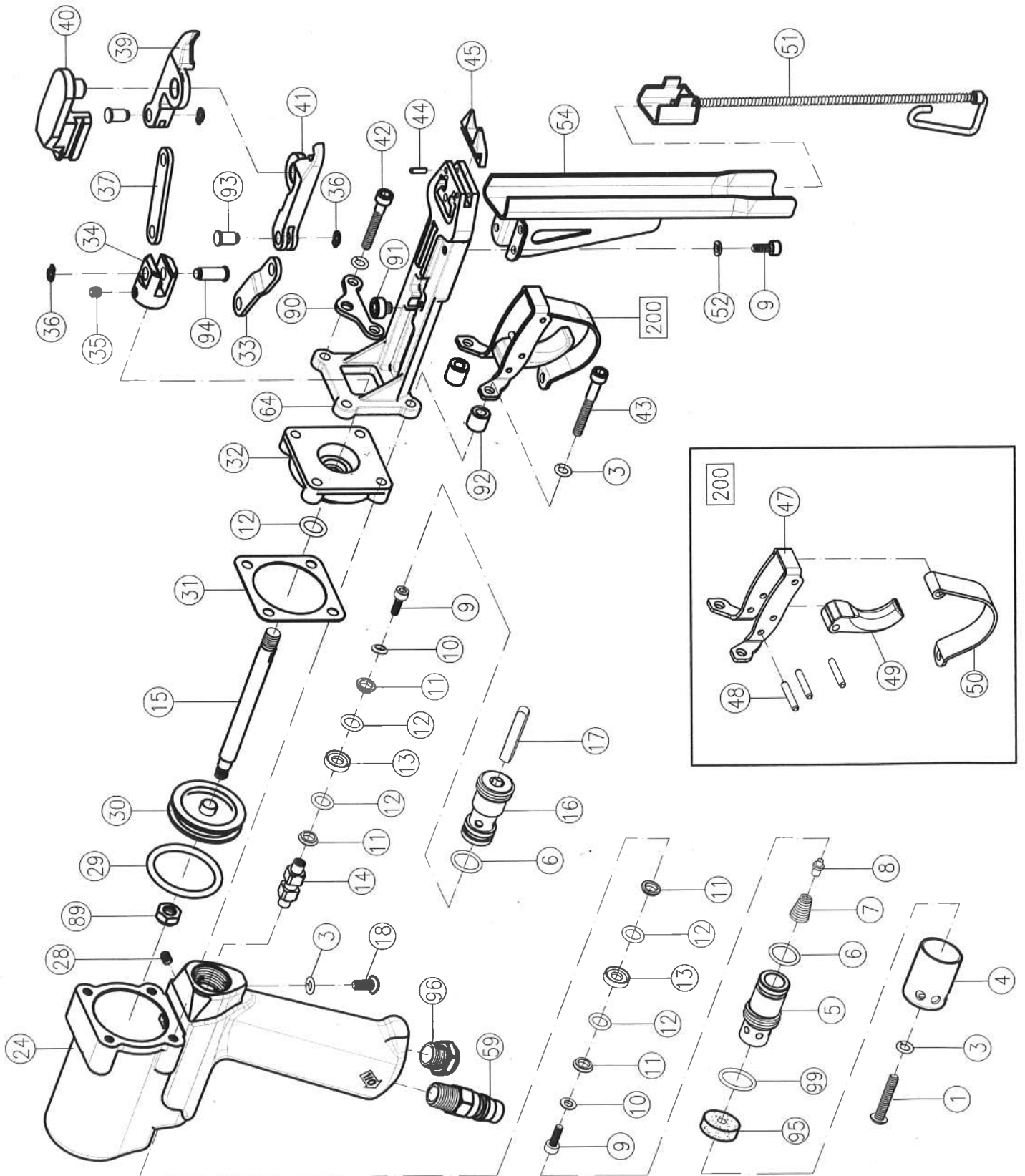
WARNING

BEFORE USING THIS TOOL, STUDY THIS MANUAL TO ENSURE SAFETY WARNING AND INSTRUCTIONS.

KEEP THESE INSTRUCTIONS WITH THE TOOL FOR FUTURE REFERENCE.

MARCH 2015

AD21



AD21

ITEM	DESCRIPTION	PART NUMBER	Q'TY
1	Set Screw	AC01094	1
3	Shakeproof lock Washer	AC01003	6
4	Air Deflector	AC01091	1
5	Rear Valve Seat	AC01005	1
6	O-Ring	AC01006	2
7	Throttle Spring	AC01007	1
8	Throttle Spring Locator	AC01008	1
9	Throttle Valve Screw	AC01009	6
10	Valve Screw Washer	AC01010	2
11	O-Ring Support	AC01011	4
12	O-Ring	AC01012	5
13	O-Ring Center Support	AC01013	2
14	Throttle Valve Spacer	AC01014	1
15	Piston Rod	AD01015	1
16	Front Valve Seat	AC01016	1
17	Throttle Stem	AD01017	1
18	Button Head Cap Screw	AC01018	1
24	Housing Assy.	AD01024	1
28	Set Screw	AC01028	2
29	O-Ring	AC01029	1
30	Piston	AD01030	1
31	Cylinder Gasket	AC01031	1
32	Piston Stop Spacer	AD01032	1
33	Right Arm Link	AD21033	1
34	Clevis	AD21034	1
35	Set Screw	AD01035	1
36	S-King	AD21036	3
37	Left Arm Link	AD21037	1
39	Left Jaw	AD21039	1
40	Slide	AD21040	1
41	Right Jaw	AD21041	1
42	Socket Head Cap Screw	AD01042	2
43	Socket Head Cap Screw	AD01043	2
44	Roll Pin	AD01044	2
45	Teeth	AD03045	1
47	Trigger Guard Bracket	AD01047	1
48	Roll Pin	AC01036	3
49	Trigger	AC01037	1
50	Trigger Guard	AC01020	1
51	Pusher Assy.(Short)	AD21051	1
	Pusher Assy.(Long)	AD23051	
52	Lock Washer	AC01056	4
54	Magazine Assy.(Short)	AD21054	1
	Magazine Assy.(Long)	AD23054	
59	Inlet Bushing	AC01059	1
64	Carriage Assy.	AD21064	1
89	Flexloc Nut	AC01089	1
90	Hanger	AD21090	1
91	Cap Screw	AD41091	1
92	Pad Roll	AD41092	2
93	Pin, Jaw	AD21093	2
94	Pin, Clevis	AD21094	1
95	Silencer cotton	AC01090	1
96	Copper Silencer	AC01093	1
99	O-Ring	AE01015	1
200	Trigger Guard Bracket Assy.	AD01200	1